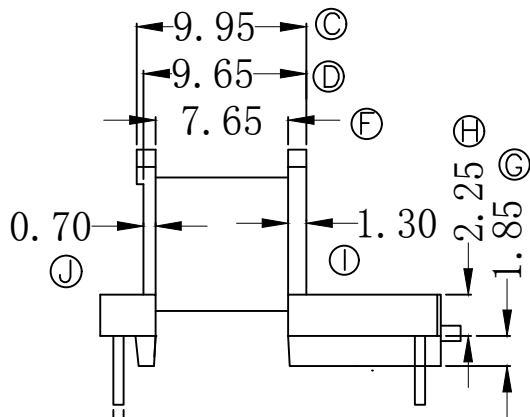
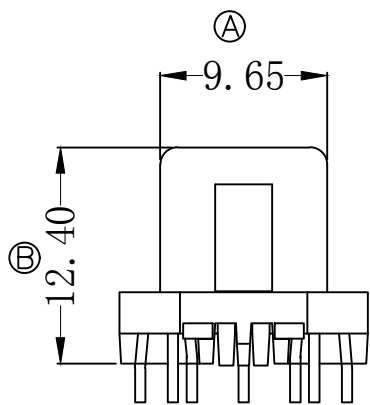
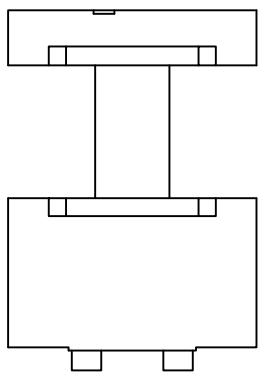
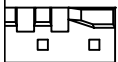
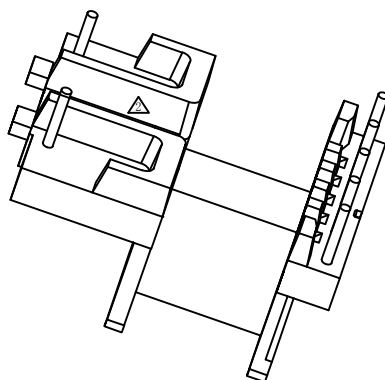
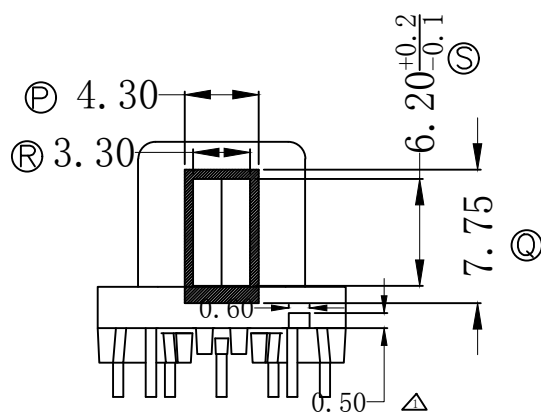
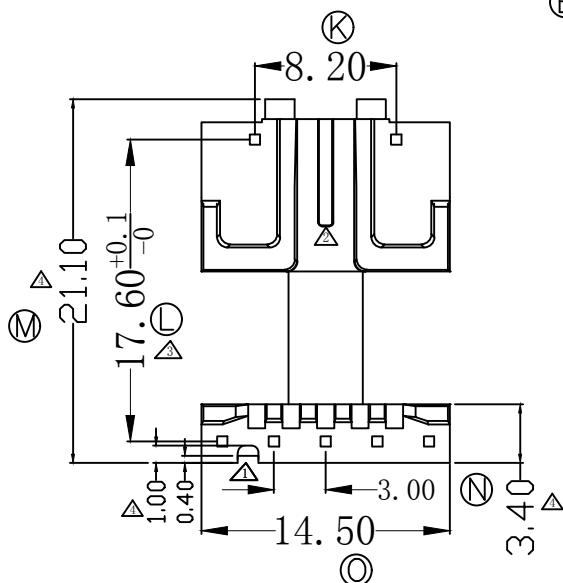


EE13 (5+2) 卧




0.60*0.60
E



日期	更改记录	明细
2020-12-5	△	初级3.4脚处小缺口长0.8*宽0.6*高0.5mm移至4.5脚间
2021-12-1	△	满足胶纸下沉平贴骨架，次级分线槽档板总长减胶2.5MM
2022-12-1	△	杜绝烘烤后内扒，调整原排距17.50为17.6 ^{+0.1}
2023-4-21	△	增加线材避让空位，把初级边加长0.2*0.25mm至3.4MM，M尺寸改成21.1MM


东莞市汇泉塑胶五金有限公司
 汇泉塑胶 DONGGUAN HUIQUAN PLASTIC HARDWARE CO., LTD

Address: 东莞市樟木头镇樟洋银洋工业区K栋
 Tel: 0769-89978391
 Fax: 0769-87196826
 E-mail: cqchao168@163.COM

TITLE:	EE13 (5+2)	SCALE:	2/1
DRAWING NO:	HT EE13-6	UNIT:	m/m
MATERIAL:	PHENOLIC	UL REC:	94V-0
PIN MATERIAL:	CP WIRE	TOLERANCE	
 PIN PITCH ± 0.20	DATE:	2016.02.29	0<L≤4: ±0.1
			4<L≤16: ±0.2
			16<L≤63: ±0.3
		ANGLE ± 1°	